

AFT SERIES

Smart 6-Axis Force / Torque Sensor



AFT200-D80-C, EC, EN

Features

- Smart 6-axis force/torque sensor
- All-in-one sensor (No additional amplifier)
- Digital output communications (C-CAN, EC-EtherCAT)
- Inertial measurement unit (IMU) integrated
- Collaborative robot, industry application, automation

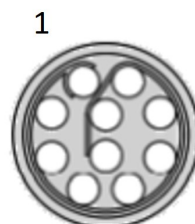


Specification table

Index	Unit	Value		
		C(CAN)	EN(EtherNET)	EC(EtherCAT)
Operating voltage	VDC	5	12	12
Operating voltage	VDC	12	24	24
Nominal force range	N	200		
Nominal torque range	Nm	15		
Limit force (F_{xyz})	N	300		
Limit torque	Nm	25		
Resolution (F_{XYZ})	N	0.15		
Resolution (T_{XYZ})	Nm	0.015		
Maximum Sample rate	Hz	1,000		
Dimensions	mm	D80 x H20.5		
Operating temperature		10-70 °C		
Interfaces		CAN, EtherCAT, EtherNET		
Connector		For User: CAN_H / CAN_L / VCC / GND ODU G40B0C-P10LCC9-0000		

* Signal noise is defined as the standard deviation of typical on second no-load signal

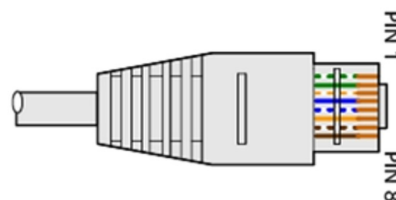
Pin out (CAN)



- 1 – NC
- 2 – 5V
- 3 – GND
- 4 – NC
- 5 – CAN_HIGH
- 6 – CAN_LOW
- 7 – NC
- 8 – NC
- 9 – NC
- 10 – NC

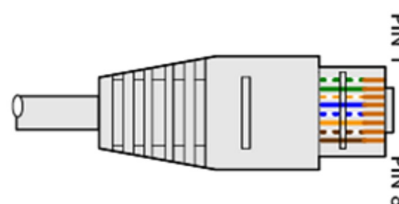
AFT200-D80-C, EC, EN

Pin out (EC)



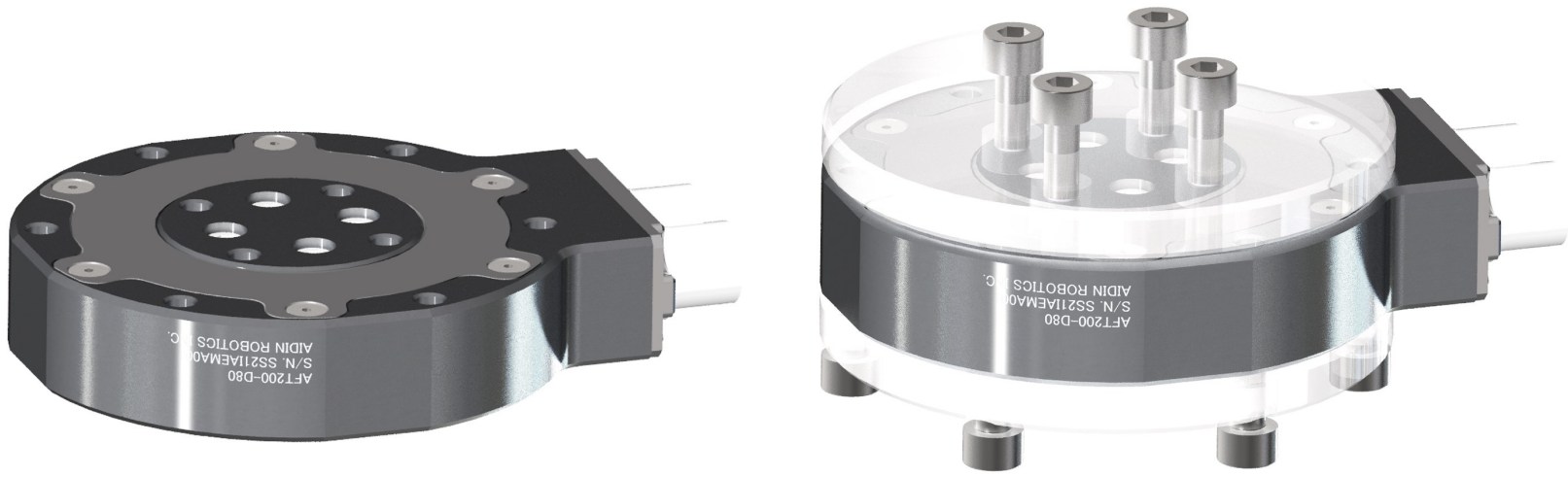
PIN	Wire	definition
PIN1	Green/White	Tx+
PIN2	Green	Tx-
PIN3	Orange/White	Rx+
PIN4	Blue	Vss+ (12-24V)
PIN5	Blue/White	
PIN6	Orange	Rx-
PIN7	Brown/White	
PIN8	Brown	Vss- (0V)

Pin out (EN)

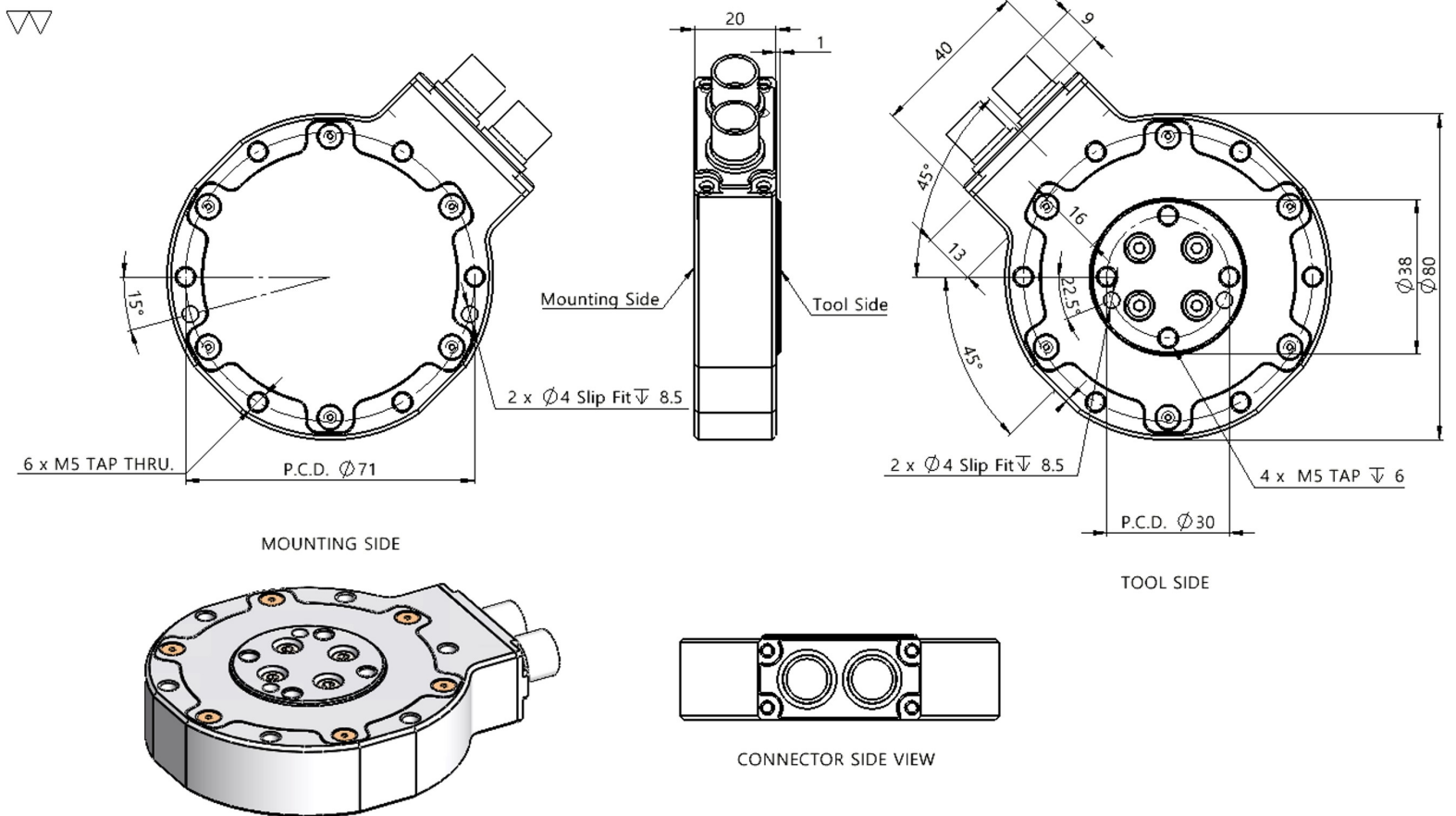


PIN	Wire	definition
PIN1	Green/White	Tx+
PIN2	Green	Tx-
PIN3	Orange/White	Rx+
PIN4	Blue	Vss+ (12-24V)
PIN5	Blue/White	
PIN6	Orange	Rx-
PIN7	Brown/White	
PIN8	Brown	Vss- (0V)

Bolting example



Drawing



AIDIN ROBOTICS Inc.

5F, 12-20, Simin-Daero 327, Dongan-gu, Anyang-si, Gyeonggi-do, Korea

Sales@aidinrobotics.co.kr | TEL: +82-31-360-7926